

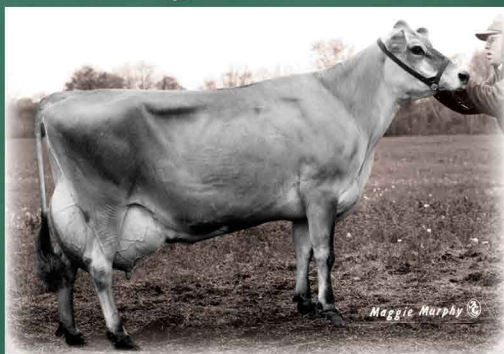
Generation after Generation PRODUCTION PREVAILS

Featuring a few of our current herd leaders from some of our favorite families!

"Teetime Magentarose," VG-83%

3-0 305 3x 25,080 4.3% 1,081 3.5% 866 102DCR

**Fresh on her third lactation at
4-6 and milking 105 lbs.**



Cherish Legend Rose, E-92%

Lifetime: 245,753M, 11,298F, 8,892P—3,590 days
3rd for milk, 2nd for fat and protein, 2001*



Dutch Hollow Lester Mischief-P-ET, E-91%

Dam of 34 registered progeny
including 7JE395 CHOICE-P

"JX Golda Devon {4}," VG-84%

5-0 305 3x 27,880 5.2% 1,451 3.4% 955 102DCR

**Working on her sixth lactation
at 7-0 and milking 112 lbs.**



Dutch Hollow Klassic Deva-P-ET, VG-88%

Lifetime: 254,125M, 12,900F, 9,051P—3,456 days
3rd for fat and 9th for milk and proprotein, 2014*



Huestis Brook Gail, E-91%

Lifetime: 233,233M, 12,435F, 9,084P—3,978 days
3rd for protein, 4th for fat and 8th for milk, 2007*

"JX Zuma Mirth {4}," E-90%

3-9 305 3x 24,600 5.4% 1,313 3.5% 857 102DCR

**Fresh on her fifth lactation at
6-2 and milking 111 lbs.**

"JX Oliver Google {5}-P," E-90%

2-11 305 3x 27,750 4.8% 1,340 3.4% 931 102DCR

**Working on her fourth lactation
at 5-0 and milking 108 lbs.**



**Dutch
Hollow
Farm**

2018 AJCA Lactation Actual Average on 696 cows: **19,402M 954F 696P**

Within herds of similar size (300-749 cows) we rank: **5th for Milk and 7th for Fat and Protein**

The Chittenden Family 101 Running Creek Road, Schodack Landing, NY 12156-9603
518/858-3790 Paul 518/320-2893 Alan 518/376-8397 Brian 518/330-3865 Nathan dutchhollowjersey@gmail.com

