

Reel in these Great Catches!



She sells at The All American Sale November 8:

Dutch Hollow Mackenzie Colina-ET, P9

Born: March 14, 2015 Sire: Missiska Mackenzie-ET

PA +1,167M +60F +49P +\$481CM JPI +181

Exciting preliminary genomics are in, numbers well above her parent average. Looking forward to see where they land officially in October!



Grandam: **Dutch Hollow Louie Charity**
Very Good-86%

2-10 305 3x 26,150 4.7% 1,232 3.4% 896

Dam of 14 sons in A.I. including: 7JE1173
PRESCOTT GJPI +183 at Select Sires and
200JE910 CLEARVISION GPI +188 at Semex

Dam: **Dutch Hollow Plus**
Charmaine-ET, VG-86%

2-0 305 3x 25,120 4.7% 1,177 3.3% 827

Dam of 7JE1376 CHARLMAGNE GJPI +170 at
Select Sires and MACCOY GJPI +205 heading to
Accelerated Genetics.

Great-Grandam: **Dutch Hollow GM Cherish, E-90%**

4-9 305 3x 28,810 4.2% 1,207 3.6% 1,023 • 6 sons in A.I.

The next dam is a VG-85% "Montana" followed by an "Alf." This family descends from Kamefield Observer Mischief-P, a matriarch of our herd.



Juniors, there is a lot of milk in this pedigree!
Look for her to sell at the Pot O'Gold Sale November 7:

Dutch Hollow Varick Exception, P9

Born: October 11, 2014 Sire: Berrys Dimension Varick-ET

+678M +\$350CM +4.0PL GJUI +16.4 GJPI +141

CDCB: GPTA 9/15 68%R JH1F

Dam: **Dutch Hollow Sebastian Example, VG-82%**

1-9 305 3x 22,740 4.1% 928 3.0% 677

Grandam: **Dutch Hollow Aiden Excel, VG-83%**

4-1 305 3x 28,240 5.0% 1,420 3.4% 948

4 lactations average 25,148—1,185—888 ME

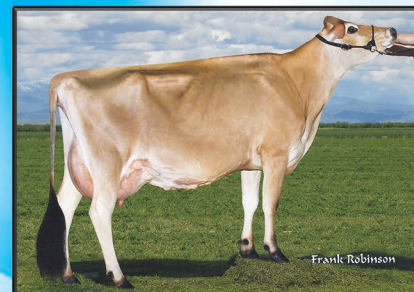
Great-Grandam: **Dutch Hollow Region Elegance, VG-88%**

3-0 305 3x 22,270 5.1% 1,131 3.6% 799

Fourth dam: **Dutch Hollow Kyle Elegant, VG-83%**

3-0 305 3x 18,260 4.7% 863 3.6% 655

The next dam is a VG-85% "Option-P" with over 21,000M



Full sister to dam:

Dutch Hollow Plus Charla-ET, E-90%

1-11 305 3x 20,950 4.8% 1,000 3.7% 767

5th place, 2014 Pot O'Gold Production Contest

Owned by Melanie Provoast, MI



Maternal sister to dam:

Dutch Hollow Renegade

Chalina-ET, VG-88%

2-11 305 3x 22,420 4.8% 1,075 3.7% 830



Maternal sister to grandam:

Dutch Hollow Valentino Cheryl-ET, E-90%

2-8 305 3x 24,660 4.3% 1,066 3.3% 803

Bid last!



The Chittenden Family 101 Running Creek Road, Schodack Landing, NY 12156-9603
518/858-3790 Paul 518/320-2893 Alan 518/376-8397 Brian 518/330-3865 Nathan dutchhollowjersey@gmail.com

