

# Genomics Made Right!

She ranks 16<sup>th</sup> in the nation for GJPI and sells on June 29!

## Dutch Hollow Visionary Meade, P9, JH1F

Born: September 13, 2012 Sire: All Lynns Legal Visionary-ET  
USDA: GPTA 5/13 8K 60%R +1,821M, +68F, +62P  
+\$622CM +3.8 PL Type +2.7 GJPI +255

Dam: Dutch Hollow G Khan Mead-P, VG-85%

4-11 305 3x 27,010 4.6% 1,240 3.2% 863 102DCR

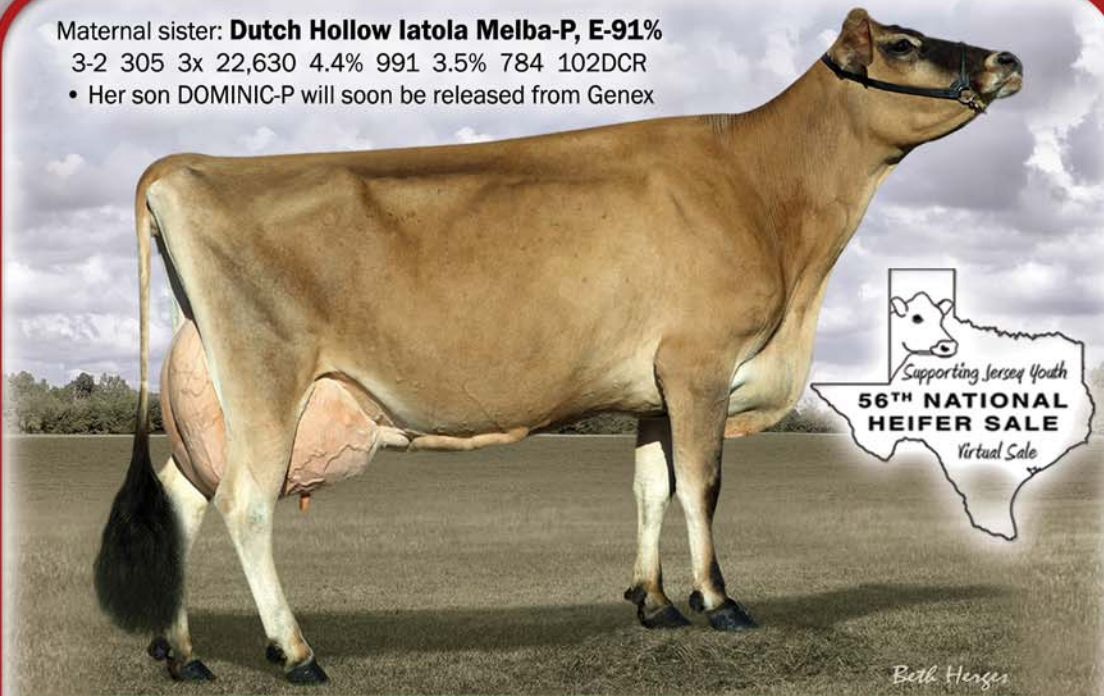
Grandam: Dutch Hollow Balance Medea-P-ET, VG-85%

6-0 305 3x 25,190 4.6% 1,148 3.4% 846 100DCR

Maternal sister: Dutch Hollow latola Melba-P, E-91%

3-2 305 3x 22,630 4.4% 991 3.5% 784 102DCR

- Her son DOMINIC-P will soon be released from Genex



Sister to the dam: Dutch Hollow Zik Medly-P, E-91%

3-10 305 3x 23,320 4.4% 1,036 3.5% 807 102DCR

- Dam of MOTIVATION-PP at Select Sires

Great-Grandam: Dutch Hollow B Masquerade-P, E-91%

5-3 305 25,610 4.2% 1,083 3.4% 874 100DCR

- 10 daughters with over 20,000M • Five sons in A.I.



The next dam is Dutch Hollow Lester Mischief-P-ET, E-91%,  
the dam of CHOICE-P and BRENDON-P.

## Bid last in Texas!

The Chittenden Family Visit us online at: <http://dutchhollow.usjersey.com>

3137 Running Creek Road, Schodack Landing, NY 12156-9603

518/732-1504 Farm/Fax 518/732-2683 Alan 518/732-4633 Brian [dutchhollowjersey@gmail.com](mailto:dutchhollowjersey@gmail.com)

