



Dutch Hollow latola Melba-P, E-91%



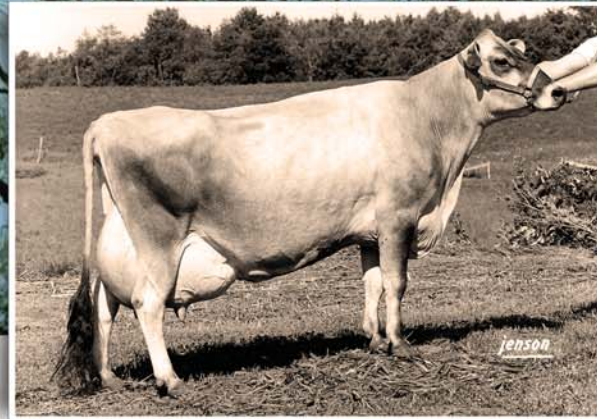
Dutch Hollow Lester Mischief-P-ET, E-91%



Dutch Hollow B Masquerade-P, E-91%



Dutch Hollow Plus Charmaine-ET, VG-86%



Kamefield Observer Mischief-P, E-91%

5-7 365 20,140 4.9% 986 3.8% 769 DHIR

Back in 1976, we had the opportunity to purchase a small group of cows and bred heifers. Included in that group was a polled bred heifer by Observer Chocolate Soldier. She soon became one of our favorites, scored E-91% and made our first 20,000 lb. record. Little did we realize at the time the lasting impact she would have on our herd and the breed.

The majority of the young sires we have placed in A.I. trace back to "Mischief-P." Bulls like TITAN-P, CHOICE-P, BRENDAN-P, OPTION-P and DIRECT DEPOSIT-P of yesterday. And newer ones like IMAGINATION-P, CHARLES, CHARLEMAGNE, MOTIVATION-PP, VINTAGE-P, CROSBY-P, DOMINIC-P, PRESCOTT, CLEARVISION, and SANCHEZ.

The popular CRITIC-P bull and his many sons and daughters trace their polled gene back to "Mischief-P" through MYGENT-P and his dam Dutch Hollow Barber Milady-P.

The exciting Jars of Clay Venerable 1771 2620-P and her sons SANTANA-P, SAXON-P, SPARTAN-P and SHOOTOUT-P get their polled gene from Dutch Hollow Berrettas Choice-P.

Circled around the page are some of our herd favorites, all of them bull mothers and all decedents of "Mischief-P."

Show your support in helping us honor this icon that helped shape polled genetics by giving her your vote in the 2015 Great Cow Contest.



Dutch Hollow Valentino Cheryl-ET, E-90%



Dutch Hollow Louie Charity, VG-86%



Dutch Hollow Zik Medly-P, E-92%



Dutch Hollow Valentino Cheryl-ET, VG-88%



GR Dutch Hollow Gannon Mirage-P-ET, E-91%



The Chittenden Family
101 Running Creek Road, Schodack Landing, NY 12156-9603
518/858-3790 Paul 518/320-2893 Alan 518/376-8397 Brian
518/330-3865 Nathan dutchhollowjersey@gmail.com

